



Enabling great talents to
shine the way they deserve...

12th December, 2006 **Press Release**

s o u l i m p r i n t s : *the soul never thinks without a picture* - a r t i s t o t i e

a painting exhibition by **Natacha Arena**

Paintings will be on display from 26 January till 31 March 2007

the coffee connoisseur “The Gallery”
51 Circular Road

presented by:



Photo by Hendrix How

Opening Hours :

Sunday to Thursday & Public Holidays 11am to 12am

Friday, Saturday & Eve of Public Holidays 11am to 2am

tcc's latest exhibition at the Art Gallery will be showcasing more than 20 unique paintings by Singapore based Belgium artist Mrs **Natacha Arena**.

The exhibition will be held from 26 January till 31 March 2007.

Media enquiries for the exhibition.

Please contact:
Claude Verly
art-management.com

Phone: (+65) 6479 2445 Fax: (+65) 6399 2818
Email: claud@art-management.com

art-management.com
19 Jalan Kelabu Asap “Holland Village” Singapore 278212
info@art-management.com Tel: (+65) 6479 2445 Fax: (+65) 6399 2818



Enabling great talents to
shine the way they deserve...

soul imprints:

the soul never thinks without a picture

- a r i s t o t l e

a painting exhibition by **Natacha Arena**

Natacha Arena is 32 years old and grew up in Brussels, Belgium.

With an interesting career background of special effects for numerous theatre productions, operas and films, she decided to leave Belgium a few years ago, give everything up to single mindedly seek out art. She had two exhibitions since she moved to Singapore.

Natacha's work is, large, sensual and dramatic. She paints intuitively. She thinks it's important to garner some sort of reaction, emotion and often they are very strong. As a person who does not believe in grey areas, she feels that the worst reaction to art is that of indifference.

Although she is reluctant to explain her art, she does mention that there is no intellectual agenda. Her paintings are predominantly parts of the human anatomy magnified. They are to be viewed purely as 'flesh', not people. She prefers not to focus too much on the subjects themselves, and to feel free during the painting process. The entire experience of painting is very sensory and lends it an almost intangible quality.

Like most artists, the process of painting is a cathartic experience for her. She lays her canvas on the floor as this affords her better mobility in terms of perspective and angle. With fascinating ease, she starts by straight away putting paint to the canvas. Until the very last moment, she constantly changes the point of view and size of the painting finally cutting it to frame. She does this to find the most interesting approach.

An admirer of the old masters, the 'chiaroscuro' effect of light and shadow are very evident in her works. The bodies are usually without heads or vice versa in order to refrain from an association to identity. The texture is rich and layered. Her medium of choice is acrylic as it is compatible with the swift pace at which she works. This results in spontaneous and dynamic energy to depict vibrancy of the human body. She feels the need to work fast so as to express her fleeting thoughts and emotions with as much authenticity as possible. Often her best works are those executed in a spur of the moment fashion because she does not believe in being deliberate or safe.

Natasha Arena is influenced by the works of Francis Bacon, George Baselitz, and Eadweard Muybridge among others.

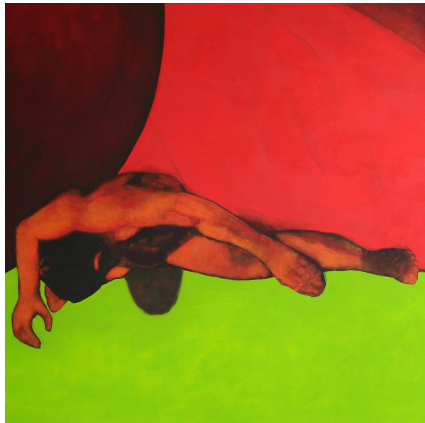
art-management.com

19 Jalan Kelabu Asap "Holland Village" Singapore 278212
info@art-management.com Tel: (+65) 6479 2445 Fax: (+65) 6399 2818



01 *Etude selon reibens*

127x124cm 2006
acrylic on canvas



12 *Exercise 3*

155x177cm 2005
acrylic on canvas



15 *Pink*

180x130cm 2006
acrylic on canvas

- **An Art Space for Everyday Use:**

At tcc's Circular Road outlet we have created an Art Gallery where a whole range of work by both local and foreign artists will be featured through constantly changing exhibitions. Something new will be on view approximately every three months.



The old heritage building that backs on to Singapore's historic river district lends itself perfectly to an art gallery. The ground floor offers the more conventional seating for those in a rush, while those who want to escape from outside pressure and stress can slip upstairs out of sight and away from the sound of the busy street outside.

Here the seating is even more unconventional; beanbags that let you sink into oblivion are scattered across the space. Here you can read the art magazines provided and enjoy the paintings on the wall. Art, like a great cup of coffee, shouldn't be rushed.

tcc created this very special art space in a city that seeks to nurture the arts because we want art to communicate in a relaxed atmosphere. And lets face it! It's so easy to relax over a good a cup of coffee.

The artists whose work appears at the Art Gallery at tcc have a wonderful opportunity to reach a wider audience through a space that is frequented by people from many areas of work, and especially those who may not have the time nor inclination to visit more conventional art spaces like museums and galleries.

- **Special Partnerships:**

tcc recognises the benefits not only of supporting the arts by forging creative partnerships with people who specialise in the arts, we also let art experts do what they're good at while we get on and do what we're best at – providing excellent service and great coffee.

We work exclusively with art-management.com, a company dedicated to promoting and managing visual artists both in Singapore and overseas.

art-management.com has, from its beginning focused on linking the artists it represents with leading brand names in a way that will be of benefit to both artist and brand. tcc is the latest in a long list of leading brands that art-management.com has been proud to work with.

Claude Verly, Director of art-management.com has commented in relation to his partnership with tcc, "One of the biggest challenges in managing art and artists in Singapore today is finding new and unusual venues in which to present the art, and then matching up the artist with the venue. This latest venture with tcc takes art-management.com into a new phase; together we can take art into the public arena rather than relying on people coming to the art. At the Art Gallery at tcc, the art will be there whether people look at it or not."

Through art-management.com, tcc is able to provide space to artists free of rent, and as a chain business we can further support them by providing publicity and exposure through media coverage and other events. tcc can help absorb many of the costs that artists find it hard to deal with.